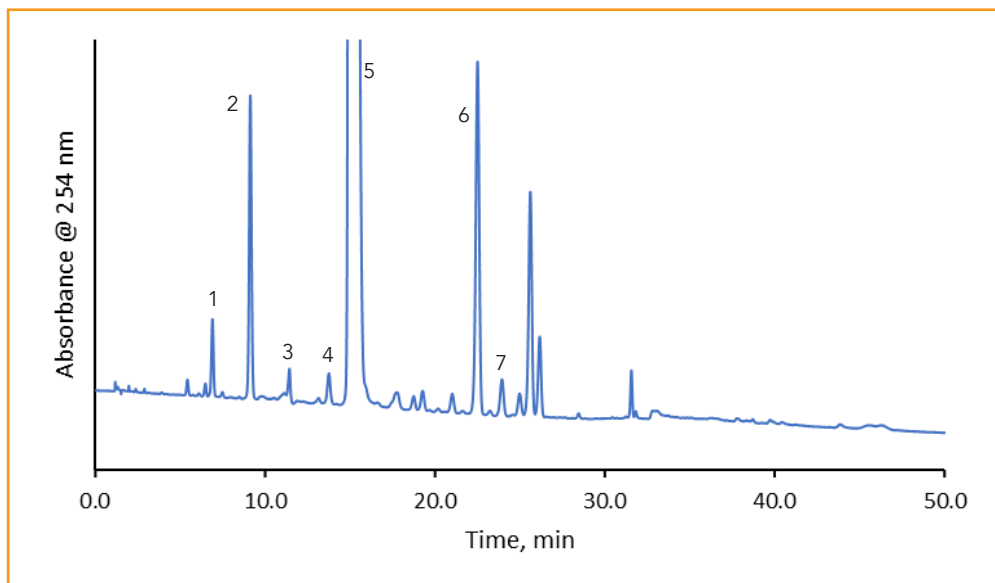




Dexamethasone Sodium Phosphate (EP 10.0)

257-S



TEST CONDITIONS:

Column: HALO 90 Å C8, 5 µm, 4.6x150 mm

Part Number: 95814-708

Mobile Phase A: 300 mL solution A, 350 mL water, 350 mL MeOH, pH: 3.8

Mobile Phase B: 300 mL solution A, pH: 4, 700 mL MeOH
 solution A: dissolve 7.0 g of ammonium acetate in 1000 mL water

Gradient:	Time	%B
	0.0	10
	3.5	10
	23.5	40
	34.5	95
	50.0	95

Flow Rate: 1.0 mL

Pressure: 209 bar

Temperature: 30 °C

Detection: UV 254 nm, PDA

Injection Volume: 20 µL Reference Solution B

Sample Solvent: mobile phase A

Data Rate: 100 Hz

Response Time: 0.025 sec

Flow Cell: 1 µL

LC System: Shimadzu Nexera X2

PEAK IDENTITIES

1. Impurity C
2. Impurity D
3. Impurity E
4. Impurity F
5. Dexamethasone sodium phosphate
6. Impurity A
7. Impurity G

Dexamethasone relieves inflammation and is used to treat several conditions such as arthritis, allergic reactions, and bowel disorders. A HALO 90 Å C8, 5µm column is used to separate dexamethasone and its impurities following the European Pharmacopoeia 10.0 method.

