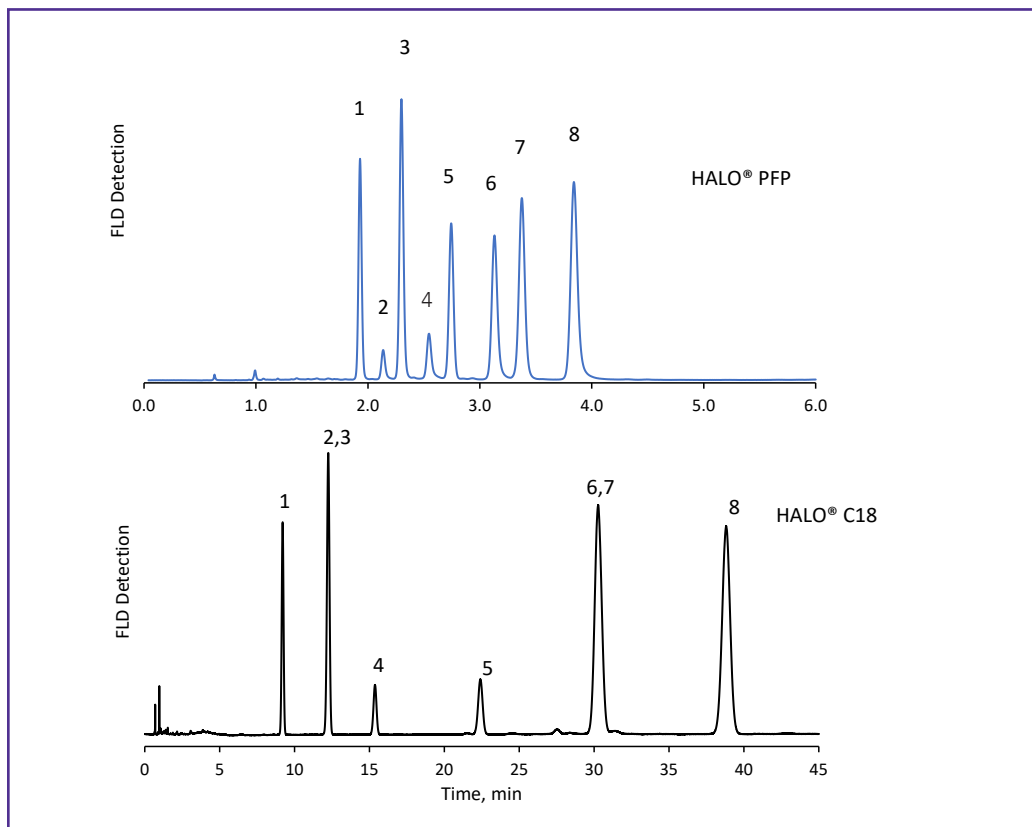




Phase Comparison for Tocopherols and Tocotrienols

242-V



PEAK IDENTITIES

1. δ -tocotrienol
2. β -tocotrienol
3. γ -tocotrienol
4. α -tocotrienol

TEST CONDITIONS:

Column: HALO 90 Å PFP, 2.7 μm , 4.6 x 150 mm

Part Number: 92814-709

Column: HALO 90 Å C18, 2.7 μm , 4.6 x 150 mm

Part Number: 92814-702

Mobile Phase A: Water

B: Methanol

Isocratic: 90 %B

Flow Rate: 1.5 mL/min

Initial Back Pressure: 383 bar

Temperature: 25 °C

Detection: FLD: Ex: 296/ Em: 325

Injection Volume: 1.0 μL

Sample Solvent: Methanol

Data Rate: 100 Hz

LC System: Shimadzu Nexera X2

Tocopherols and tocotrienols are a form of Vitamin E (fat-soluble) that have antioxidant properties in both the body and in food. They are also used for cosmetics and many personal care products. A separation of tocopherols and tocotrienols is performed on a HALO® PFP and C18 column. The PFP column shows 10x faster run times along with baseline resolution compared to the C18 column under the same testing conditions.

