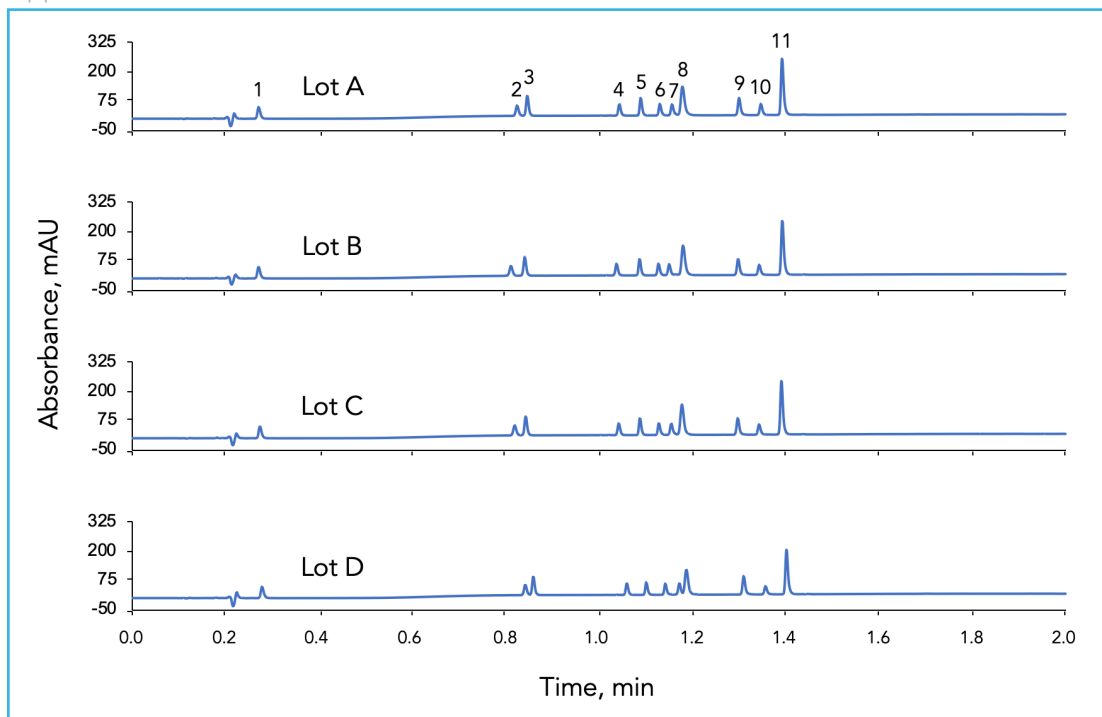




HALO 160 Å ES-C18, 2.0 µm Lot Reproducibility

Application Note 138-PE



The lot-to-lot reproducibility of HALO® 2.0 µm 160 Å ES-C18 is maintained by tightly controlled manufacturing practices and quality assurance testing. This ensures the reliability of the product over its lifetime.

TEST CONDITIONS:

Column: HALO 160 Å ES-C18, 2.0 µm,
3.0 x 50 mm
Part Number: 91123-402
Mobile Phase:
A: 0.1% trifluoroacetic acid in water
B: 0.1% trifluoroacetic acid in 80/20
acetonitrile/water
Gradient: Hold at 12.5% B for 0.1 min;
12.5% B to 93% B from 0.1 – 2.0 min
Flow Rate: 1.1 mL/min
Initial Pressure: 278 bar
Temperature: 60 °C
Detection: UV 215 nm, PDA
Injection Volume: 0.5 µL
Sample Solvent: Mobile phase A
Response Time: 0.025 sec
Flow Cell: 1.0 µL
Data Rate: 200 Hz
LC System: Shimadzu Nexera X2

PEAK IDENTITIES:

1. Gly-Tyr
2. Val-Tyr-Val
3. Angiotensin 1/2 (1-7) amide
4. Met-enkephalin
5. Angiotensin 1/2 (1-8) amide
6. Angiotensin II
7. Leu-enkephalin
8. Ribonuclease A
9. Angiotensin (1-12) (mouse)
10. Bovine Insulin
11. Angiotensin (1-12) (human)

MW (g/mol)	% RSD (retention times)
238	1.21
380	1.59
898	0.95
574	0.92
1045	0.60
1046	0.61
556	0.82
13,700	0.35
1573	0.46
5733	0.49
1509	0.36

